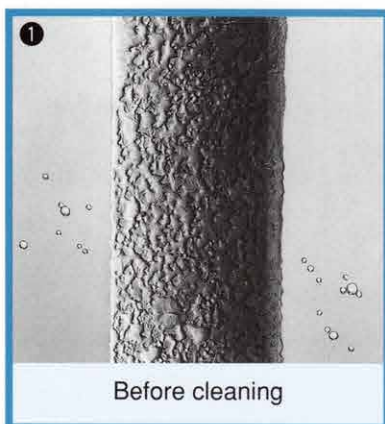


FUJI AUTOMATIC BACK-FLUSHING FILTRATION SYSTEM

The Fuji Filter automatic filtration and back-flushing unit is a highly innovative unique system that fully utilizes the outstanding properties of FUJIPLATE metal filter elements. FUJIPLATE surface filtration metal elements effectively trap solid contaminants suspended in filtrate liquids and the structure facilitates easy back-flushing. Due to its advanced design and excellent performance, it is supplied to numerous industries throughout the world.

The automatic back-flushing filtration mechanism

When the filtrate passes through FUJIPLATE elements, solid contaminants are trapped on the surface. This causes a bridging effect and a cake layer gradually accumulates on the surface which results in even higher precision filtration. As solid contaminant caking forms only on the filter surface, it is easily removed. When filtration pressure reaches a predetermined level, the back-flushing system is activated, thus restoring the filter element to a clean state and allowing continuous separation of solid contaminants from liquids. The system operates on a 24-hour basis ensuring continuous automatic filtration.



FUJI AUTOMATIC BACK-FLUSHING FILTRATION SYSTEM

Fuji Filter has extensive experience in the area of automatic back-flushing filtration systems. Our systems can also employ Wedge Wire elements as the filtration media. Our automatic back-flushing filtration systems are compatible with both internal back-wash (use filtrated liquid for back-flushing) and external back-wash (back-flush media such as gas or liquid is supplied from outside the system) as well as external back-wash/purge types (cleaning liquid is charged into the housing before external back-wash to minimize the contaminants in the filtrated liquid). We are the only company able to manufacture automatic back washing systems up to 900#. Our industrial application experience, accumulated over many years of creating systems incorporating FUJIPLATE metal filter elements, has clearly demonstrated their superiority to Wedge Wire elements.

Filtration Media

There are two options, FUJIPLATE (recommended) and Wedge Wire elements

FUJIPLATE Media (please refer to the FUJIPLATE brochure)

Due to its highly functional structure, filtration efficiency can be controlled in both vertical and horizontal directions. As each layer of mesh is sintered, the grade of filtration is fixed permanently. FUJIPLATE features a void volume (open area) of over 30%, far greater than the approximately 5% of Wedge Wire media. This is directly related to the initial pressure drop and service life of filters, with the larger value giving superior performance. In view of this, we strongly recommend FUJIPLATE. However, if you prefer to use Wedge Wire media, we can supply these products with no changes in size, specifications or FUJIPLATE model price.

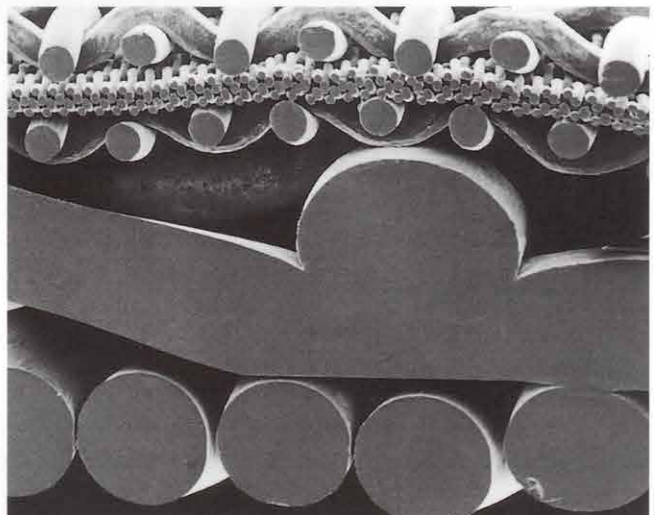
Wedge Wire Media

We also supply this unit fitted with Wedge Wire elements.

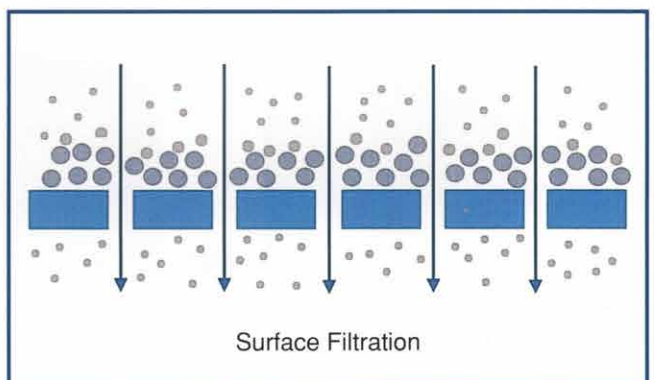
The filtration efficiency (grade) of this media is controlled by the distance between wires (SLIT). The minimum slit size with this media is 25 microns, but this does not afford horizontal control and there is a degree of distance tolerance of each slit.

Quality Control

This equipment is in compliance with ISO 9001 standards and was so certified on April 10, 1997.



FUJIPLATE/5 layer structure



Surface Filtration



FUJI FILTER 富士フィルター工業株式会社
MFG.CO.,LTD.
2-3-4 Nihonbashi, Chuo-ku, 103-8308 Tokyo JAPAN
TEL: +81-3-3241-4201 FAX: +81-3246-1288 www.fujifilter.com